



Australia's biggest Woolies and new Big W store set for Port Adelaide Plaza



The Port Adelaide Plaza shopping centre. Supplied by Precision Group

By **GIUSEPPE TAURIELLO**
BUSINESS REPORTER

UPDATED 7:48AM FEBRUARY 29, 2024, FIRST PUBLISHED AT 6:30PM FEBRUARY 28, 2024

Australia's biggest Woolworths supermarket and a new Big W store will open at the Port Adelaide Plaza shopping centre in Adelaide as part of a deal struck between parent company Woolworths Group and rich list investor Shaun Bonett's Precision Group.

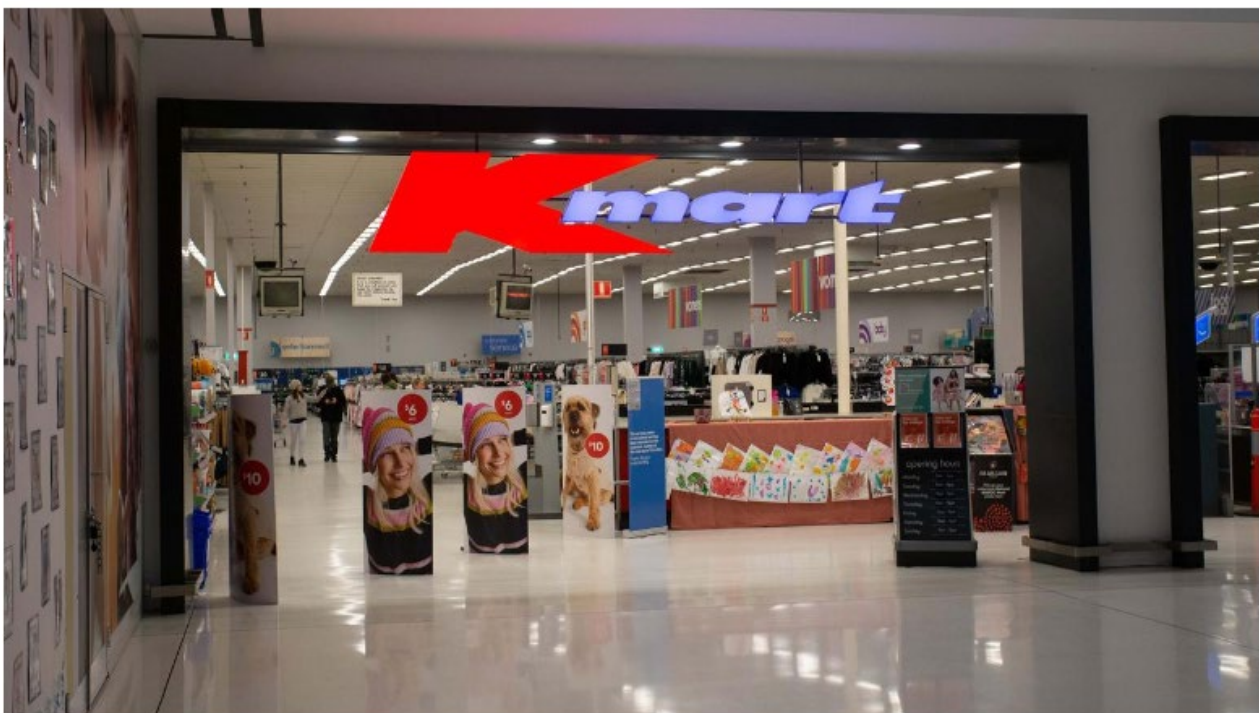
The openings follow a recent \$75m redevelopment of the centre, which kick-started Mr Bonett's path to becoming one of the country's wealthiest, and most successful property investors.

Precision Group was founded by Mr Bonett in Adelaide in 1994, and made its first major acquisition in 1998, buying the Port Canal Shopping Centre. It was later renaming Port Adelaide Plaza as part of the expansion which was completed in 2022.

Sydney-based Mr Bonett said the new supermarket would open in early 2025, replacing a Coles site that had the capacity to be developed into Australia's largest Woolworths store.

“Based upon current detailed floorplans, it is our vision to deliver the largest Woolworths supermarket in Australia at Port Adelaide Plaza,” he said.

“The specific floor plan for the Woolworths supermarket will be confirmed as detailed plans are developed. What we can confirm is the current trading floor-plate is able to be configured to accommodate our vision.”



The Kmart store at Port Adelaide Plaza. Picture: Brett Hartwig

Meanwhile the Big W store will be the discount department chain's first new opening in South Australia since the launch of its Brickworks Marketplace store in 2015.

It will take over the space currently occupied by rival Kmart which confirmed last September that it would close at the end of May, despite backlash from some local shoppers.

At the time, a company spokesperson said the company had made the decision to close the store after a review had determined the community could be supported by nearby stores at West Lakes and Churchill Rd.

The new large-format Big W store will occupy 6500sq m of space, stocking its traditional product lines ranging from homewares, clothes and toys to a full-service "party counter" and direct-to-boot service.



Port Adelaide Plaza Shopping Centre. Supplied by Precision Group

It is expected to begin trading at the end of 2024, followed by the Woolworths supermarket opening in early 2025.

"We're delighted that Woolworths Group has committed to growing its presence in South Australia with Precision Group," Mr Bonett said.

“Our strategic focus is always to attract more people to Port Adelaide Plaza – delivering new and everyday shopping experiences that make people want to come and spend their time with us.

“We’re looking forward to celebrating the opening of these two brand new stores with our Port Adelaide customers in the near future.”

From 2019 to 2022, Port Adelaide Plaza underwent a \$75m redevelopment and refurbishment, transforming the existing mall into an enlarged retail precinct, with the addition of Aldi and more than 60 specialty and services retailers.

Precision Group owns a portfolio of shopping centres across the country, including the Chevron Renaissance centre in Queensland and the Pran Central shopping centre in Melbourne.